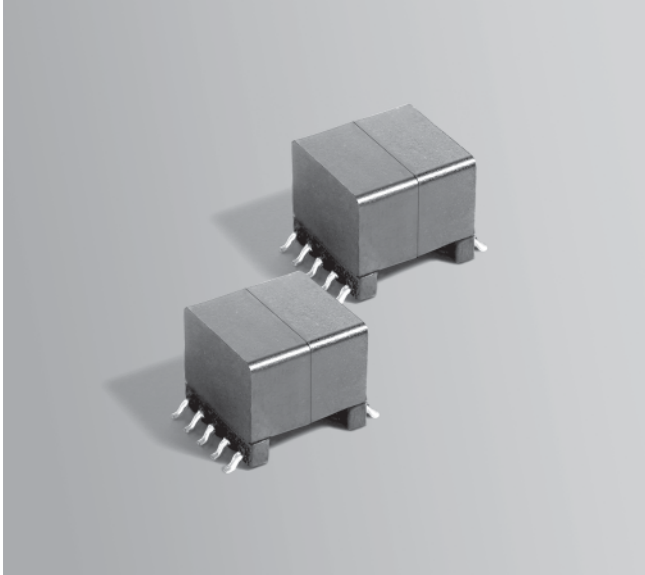




NEW!

Forward Converter Transformer

For NSC LM5015
DC-DC Regulator



- Referenced on National Semiconductor application note AN-1724 as CA2983-CL and on AN-1725 as GA2983-CL
- Designed for forward topology operating at 250 kHz
- 1500 Vrms isolation from primary and aux to the secondary

Core material Ferrite

Terminations RoHS tin-silver over tin over nickel over phos bronze. Other terminations available at additional cost.

Weight 7.0 g

Ambient temperature -40°C to +85°C

Storage temperature Component: -40°C to +85°C.
Packaging: -55°C to +80°C

Resistance to soldering heat Max three 40 second reflows at +260°C, parts cooled to room temperature between cycles

Moisture Sensitivity Level (MSL) 1 (unlimited floor life at <30°C / 85% relative humidity)

Mean Time Between Failures (MTBF) 26,315,789 hours

Packaging 175 per 13" reel Plastic tape: 32 mm wide, 0.5 mm thick, 28 mm pocket spacing, 12.93 mm pocket depth

PCB washing Only pure water or alcohol recommended

Part number ¹	Inductance ² nom (µH)	DCR max (mOhms) ³			Leakage inductance ⁴ max (µH)	Input voltage range (V)	Turns ratio ⁵		Output ⁶
		pri	sec	aux			pri : sec	pri : aux	
FCT1-50M1SL_	705	55	13.5	320	0.425	36 – 75	1 : 0.33	1 : 0.67	5 V, 3 A

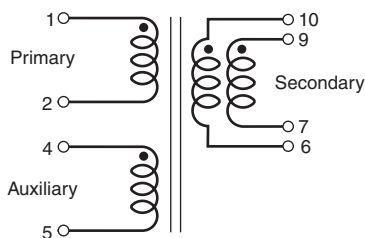
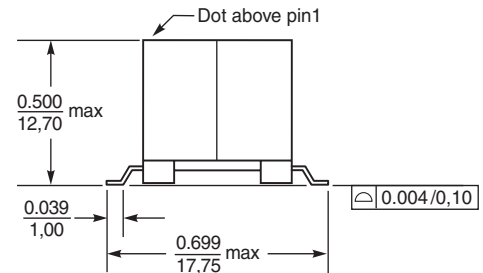
1. When ordering, please specify a **packaging** code:

FCT1-50M1SLD

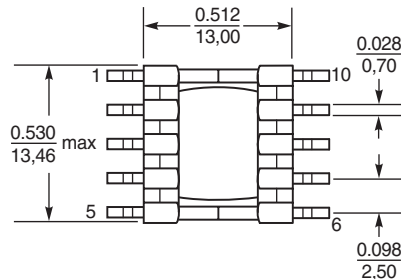
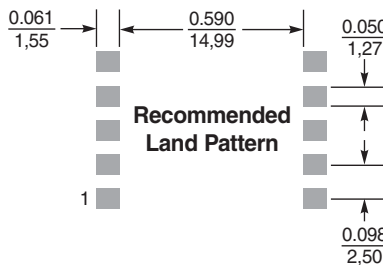
Packaging: D = 13" machine ready reel. EIA-481 embossed plastic tape (175 parts per full reel).

B = Less than full reel. In tape, but not machine ready. To have a leader and trailer added (\$25 charge), use code letter D instead.

- Inductance is measured at 250 kHz, 0.5 Vrms, 0 Adc.
 - DCR for the secondary is measured with the windings connected in parallel.
 - Leakage inductance is for the primary and is measured with the secondary shorted.
 - Turns ratio is with the secondary windings connected in parallel.
 - Output is with the secondary windings connected in parallel. Auxiliary winding output is 10 V, 20 mA.
 - Electrical specifications at 25°C.
- Refer to Doc 362 "Soldering Surface Mount Components" before soldering.



Secondary windings to be connected in parallel on PC board.



Dimensions are in inches/mm

Coilcraft®

Specifications subject to change without notice.
Please check our website for latest information.

Document 635 Revised 01/28/08

1102 Silver Lake Road Cary, Illinois 60013 Phone 847/639-6400 Fax 847/639-1469

E-mail info@coilcraft.com Web http://www.coilcraft.com