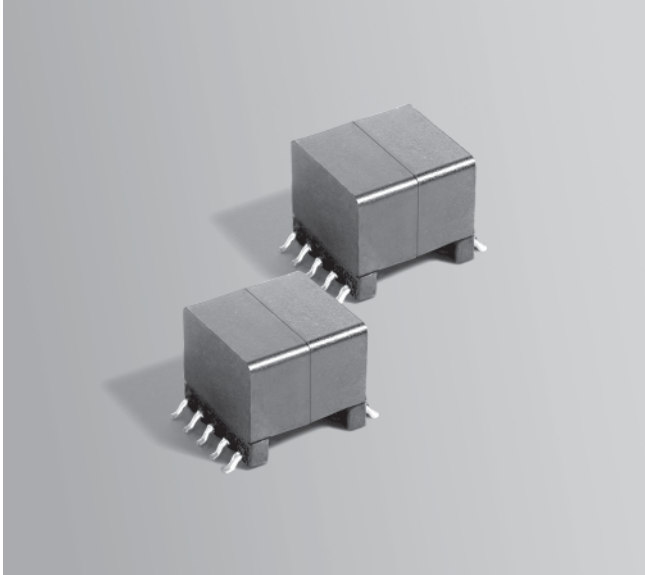




NEW!

Flyback Transformers

For Silicon Laboratories Si3400 and Si3401 PD Controllers



- Designed for Power over Ethernet PD controllers for applications up to 15 Watts.
- Operates in continuous conduction mode with 36 – 57 V input
- 1500 Vrms isolation between primary and secondary

Core material Ferrite

Terminations RoHS tin-silver over tin over nickel over phosphor bronze. Other terminations available at additional cost.

Weight 6.57 – 6.71 g

Ambient temperature –40°C to +85°C

Storage temperature Component: –40°C to +85°C.
Packaging: –55°C to +80°C

Resistance to soldering heat Max three 40 second reflows at +260°C, parts cooled to room temperature between cycles

Moisture Sensitivity Level (MSL) 1 (unlimited floor life at <30°C / 85% relative humidity)

Mean Time Between Failures (MTBF) 26,315,789 hours

Packaging 175 per 13" reel Plastic tape: 32 mm wide, 0.5 mm thick, 28 mm pocket spacing, 12.93 mm pocket depth

PCB washing Only pure water or alcohol recommended

| Part number ¹ | Power (W) | Inductance at 0 A ² ±10% (µH) | Inductance at I _{pk} ³ min (µH) | DCR max (Ohms) ⁴ | | Leakage inductance ⁵ max (µH) | Turns ratio ⁶ pri : sec | I _{pk} ³ (A) | Output ⁷ |
|--------------------------|-----------|------------------------------------------|-----------------------------------------------------|-----------------------------|-------|------------------------------------------|------------------------------------|----------------------------------|---------------------|
| | | | | pri | sec | | | | |
| FA2924-AL_ | 15 | 40.0 | 36.0 | 0.100 | 0.025 | 0.666 | 13 : 4 | 2.0 | 3.3 V, 4.5 A |
| FA2805-CL_ | 15 | 40.0 | 36.0 | 0.108 | 0.040 | 0.621 | 5 : 2 | 2.0 | 5.0 V, 3.0 A |
| FA2925-AL_ | 15 | 40.0 | 36.0 | 0.100 | 0.155 | 0.566 | 1 : 1 | 2.0 | 12.0 V, 1.25 A |

1. When ordering, please specify **packaging** code:

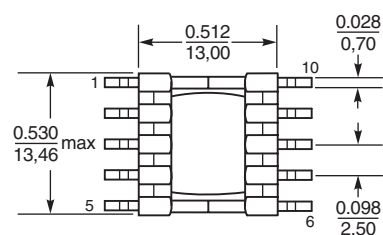
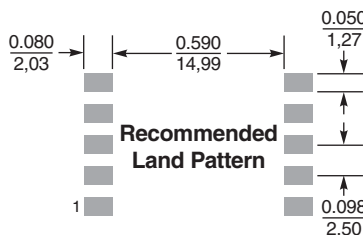
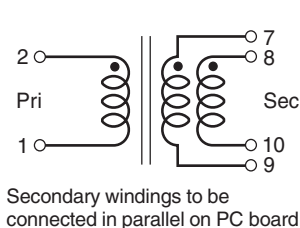
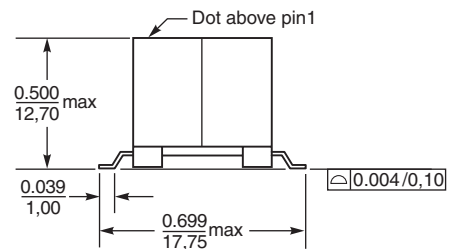
FA2925-AL D

Packaging: D = 13" machine-ready reel. EIA-481 embossed plastic tape (175 parts per full reel).

B = Less than full reel. In tape, but not machine ready. To have a leader and trailer added (\$25 charge), use code letter D instead.

- Inductance is for the primary, measured at 200 kHz, 0.2 Vrms, 0 Adc.
- I_{pk} is peak primary current drawn at minimum input voltage.
- DCR for the secondary is per winding.
- Leakage inductance measured between pins 1 and 2 with all secondary pins shorted.
- Turns ratio is with the secondary windings connected in parallel.
- Output is with the secondary windings connected in parallel.
- Electrical specifications at 25°C.

Refer to Doc 362 "Soldering Surface Mount Components" before soldering.



Coilcraft[®]

Specifications subject to change without notice. Please check our website for latest information.

Document 608 Revised 09/03/08

1102 Silver Lake Road Cary, Illinois 60013 Phone 847/639-6400 Fax 847/639-1469

E-mail info@coilcraft.com Web <http://www.coilcraft.com>