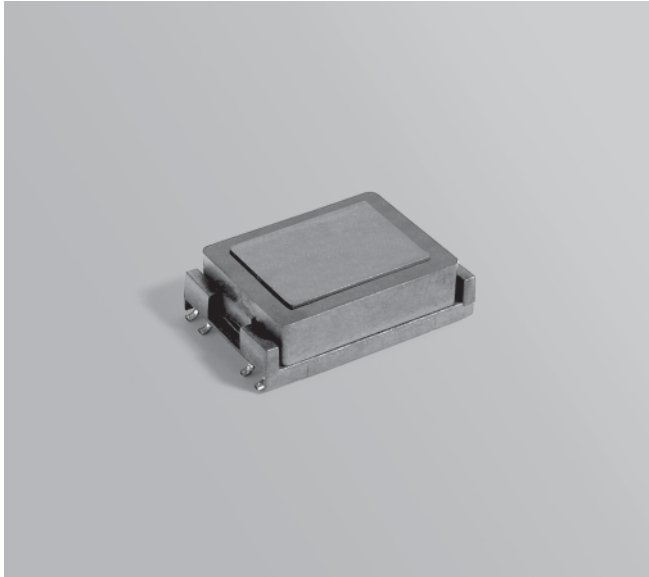




NEW!

CCFL Transformer

For Texas Instruments
TPS68000 CCFL Controller



The FA2786-BL was developed specifically for the Texas Instruments TPS68000 Phase Shift Full Bridge CCFL Controller. It is designed for use in cold cathode fluorescent lamp power supplies operating at frequencies up to 100 kHz.

This transformer is specified in the Texas Instruments TPS68000EVM-202 dual-transformer reference design. This reference design shows a single TPS68000 driving two FA2786-BL transformers and CCFL lamps. Isolation is 500 Vrms between windings and 2000 Vrms from each winding to the core.

Free evaluation samples are available by contacting Coilcraft or ordering them on-line at www.coilcraft.com.

Part number ¹	Turns ratio pri : sec	Output (Watts)	Inductance ² min (µH)	Vin (Volts)	Imax sec (mA)	Vrms ³ sec (Volts)	Vinst max ⁴ sec (Volts)	DCR max (Ohms)	
								pri	sec
FA2786-BL_	1 : 100	6.0	160	8 – 20	7.0	1600	2000	0.621	937.3

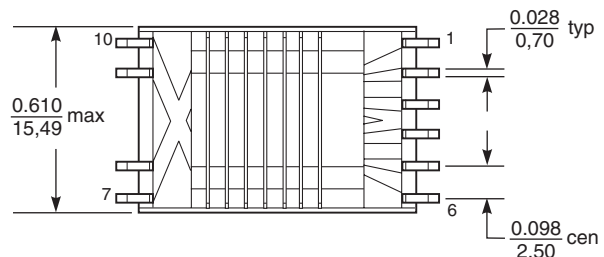
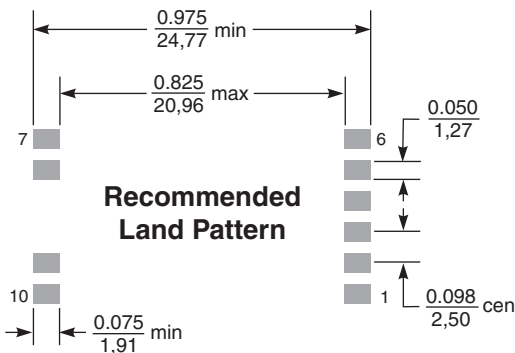
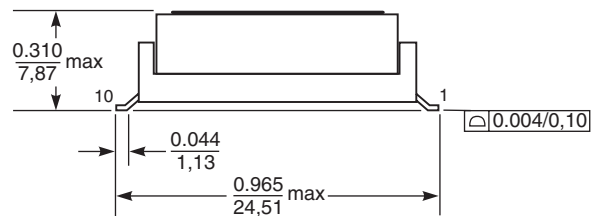
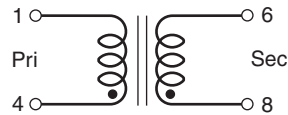
1. When ordering, please specify a **packaging** code:

FA2786-BL D

Packaging: D = 13" machine ready reel. EIA-481 embossed plastic tape (400 parts per full reel).

B = Less than full reel. In tape, but not machine ready. To have a leader and trailer added (\$25 charge), use code letter D instead.

- Inductance measured at 1 Vrms, 60 kHz, 0 Adc.
- Vrms = continuous voltage.
- Vinst = instantaneous voltage at startup.
- Ambient operating temperature range -40°C to +85°C.
- Electrical specifications at 25°C.



Weight: 6.0 g
Terminations: Tin-silver over tin over nickel over phos-bronze
Tape and reel: 400/13" reel 44 mm tape width
 For packaging data see Tape and Reel Specifications section.



Specifications subject to change without notice.
 Please check our website for latest information.

Document 575 Revised 01/18/07